

HOUSE of the MONTH

Manhattan TRANSFER

How do you translate a love of exposed brick and industrial luxe to an Edwardian family home? Easy, says Sue, who has created the ideal NYC-London style clash

Words – Andréa Childs
Photography – Simon Brown
Styling – Mary Weaver

DINING ROOM

With its mix of Edwardian, industrial and mid-century features, this room sums up Sue's vision for the house. 'I love how brick can warm up a room,' she says. 'I've made the ceiling look higher by painting it the same colour as the woodwork – making it recede visually.'

GET THE LOOK This is the Round Baroque table by Moissonnier. Find vintage Harry Bertola chairs for Knoll at Firefly House. For new Knoll Bertola side chairs, go to Aram Store. The Red Hand cabinet is the ESCM01 by Rupert Blanchard. Above it is a painting by Debra Franes Bean. The ceilings and woodwork are painted in Fired Earth's Tempest matt emulsion.

Home profile

THE OWNERS Sue Miller, a property developer and interior designer, her husband Peter, COO of Westfield's UK shopping centres, their children, Jack, 20, Max, 10, and Yaeli, eight, plus Herbie the dog.

THE PROPERTY A double-fronted Edwardian house in north London. There's a gym, cinema, playroom, utility room, boot room and WC in the basement. The ground floor has a living room, study, kitchen and dining room. On the first floor there are four bedrooms, one with en suite, plus a family bathroom. The master suite is in the loft conversion, with a main bedroom and en suite, walk-in wardrobe, study and terrace.

KITCHEN

'The design is based on my obsession with Manhattan loft style and all things industrial,' says Sue. 'I wanted hanging pendants and looped cables – I even moved the Aga, as I knew the flue would give that factory feel against the brick.' This room is the hub of the house, with sightlines into the dining room and living room, so the family always feels connected. The units are deliberately simple, to let 'my artwork and crockery do the talking'.

GET THE LOOK The Urbo kitchen units by Roundhouse are painted in Graphite matt lacquer from Kevin McCloud's Elements of Colour range at Fired Earth (the insides are walnut). The vintage Bienaise stools came from Archéologie Industrielle in Paris – find similar at Out & Out Original. Davey Lighting at Conran Contracts made the pendant light. The neon Trust Me artwork is by Bianca Hall for Rockett St George, mounted in Perspex for safety. Find similar crockery and glassware at Anthropologie.

I'm obsessed with Manhattan, industrial loft style. It comes from living in New York when I was younger and in a band – I had the same manager as Bon Jovi, so it was very rock 'n' roll! I fell in love with the rawness and buzz of the city – it's a place where you can walk around in hot pants and a bra and feel at home. I tried to bring that vibrancy and edge to this house. It's NY meets north London.'

So says Sue Miller, who may have swapped her guitar and mic for a new career as an interior designer, but she isn't about to lose her cool. 'My original thinking for this place was to go for a New York-style loft feel, with a smattering of mid-century décor, a bit of industrial edge, plus some reintroduced Edwardian details,' she says. Incredibly, that's what she has achieved, with the décor taking a visual journey from the stained-glass grandeur of the hallway to the exposed brickwork of the kitchen, dining room and master bedroom, via polished concrete floors and a hefty dose of rough-and-ready slate in the living room.

Sue and her husband Peter bought the house in March 2011 and then spent another 18 months revamping it. 'The previous owner hadn't done much, so it was a series of small rooms with few original features remaining. In essence, it was a bit of a Seventies shell,' says Sue. Work began in the existing basement garage and cellar, which were extended to create a lower-ground play zone. The highlight is the colourful games room, with its floor made from favourite album covers scanned on to vinyl. 'I played with thumbnail images on my computer first to get the perfect patchwork effect, then Instagrammed the covers to give a washed-out Seventies look,' explains Sue.

While construction continued in the basement, Sue put the

'I love to create a patchwork look, contrasting feminine materials such as crystal and velvet against masculine slate and concrete'

contract for the rest of the house out to tender. 'My initial plan involved moving the staircase, but we realised it would take us massively above budget,' she says. 'Instead, we found a contractor who was willing to work with us to shave back the overspend.'

The builders were less than enthusiastic about her decorating choices, however. 'The foreman kept complaining about the dark paint colours, saying the study looked like a dungeon,' laughs Sue. 'The thing is, I'd planned on having a paler palette, but I kept being drawn back to inky blue, charcoal and petrol. I used them at the front of the house, but kept the exterior very understated, so when you open the door, it has real impact.' The theatricality suits the family. Daughter Yaeli has provided voices for cartoons, including CBeebies's *Sarah and Duck*, and son Max spent six months on the West End stage, appearing in *Priscilla Queen of the Desert*. 'The most hilarious moment was at the dress rehearsal when the actors came out in full drag, with false eyelashes and sequins, and Max forgot every word of his script,' remembers Sue.

For all its richness and glamour, there's a distressed theme running through the décor. The floorboards are reclaimed, the walls are polished plaster and ancient oak is used to make a shelf in the living room. 'I'd sourced some 200-year-old elm that I wanted to use in the study. When the builders brought it back all cut and polished, I was devastated,' says Sue. Fortunately, she's managed to keep a few of the rough edges she loves. 'I've called my company Mad Cow Interiors because it makes a bold statement about my style,' she says. 'And it's a pretty apt description of me too!'

For more information about Sue's interior design and property development service, go to madcowinteriors.co.uk

LIVING ROOM

Sue's love of a distressed finish is on full display with the bench-cum-shelf made from 150-year-old oak. 'I love the juxtaposition of tactile textures like the velvet sofa against concrete and stone,' she explains. 'You need softness and shine to counterbalance hardness and natural materials against clean lines.'

GET THE LOOK This is a Jimmie Martin coffee table on a Brink & Campman rug. For a similar bespoke velvet sofa, go to Conran Contracts. Butterfly Home by Matthew Williamson at Debenhams makes similar cushions. Skip the paint and opt for plaster walls by Polished Plaster Company Interiors. For a shelf like this one, try the Astern TV unit at Little Tree Furniture.



LIVING ROOM

The corner has a mid-century vibe, with a pair of Fifties Danish cocktail chairs in front of the massive slate fireplace. Instead of a drinks cabinet, bottles are arranged on an occasional table – very *Mad Men*. **GET THE LOOK** Stonemason Andrew Power installed the slate fireplace. The vintage Fifties Danish cocktail chairs were bought on eBay and re-upholstered in Sheila Coombes fabric, topped with cushions from Squint. Ruby in the Dust supplied the vintage glass coffee table via Fab.com. Achica makes the occasional table. Out There Interiors at notonthehighstreet.com makes a green beaded pendant light. The circular rug is from Larusi.



LIVING ROOM →

Yaeli hangs out with her guitar. The family are born performers – Yaeli models and does voiceovers for TV, Max performed on the West End stage in *Priscilla Queen of the Desert* and together with Sue, they appeared in an episode of *Holby City*. **GET THE LOOK** The hanging chair is by Enzo Berti Kata from Conran Contracts. Find the Arco floor lamp by Achille Castiglioni for Flos at Nest. Abigail Ahern sells the Rasta floor cushion.



‘So much love has gone into this house, I’d find it hard ever to part with it’



← ↩ PLAYROOM

The floor is a patchwork of Sue’s favourite album covers, printed on to vinyl and covered with resin. ‘I loved the result so much, I almost put it in the kitchen too,’ she says. The Seventies vibe is enhanced with orange walls and hippie-luxe cushions.

GET THE LOOK The walls are painted in Beetlenut matt emulsion by Paint Library. Find the snooker table at The Games Room Company. Vintage Unit supplies enamel industrial pendants. The cushions on the bench are by JasmineWay. Sue made the table from a Singer sewing machine base and reclaimed elm top.



Yaeli's Bedroom ↑

'We've future-proofed Yaeli's room so she can grow into a teenage Goth,' laughs Sue. The fireplace was one of the few original features left in the house when the family moved in. The mirror and its cast-iron surround were moved from the ground-floor study.

GET THE LOOK The wallpaper is Nina Campbell's *Swan Lake* at Osborne & Little. For chandeliers like this, try thefrenchhouse.co.uk. The bed is the Florence from Furniture Brit.

Max's Bedroom →

A favourite photograph taken at Arsenal's Emirates Stadium has been blown up and abstracted to create the ultimate picture wall. 'I thought he'd get less bored with the image that way,' explains Sue.

GET THE LOOK Contact JW Walls for personalised digital wallpaper. The desk/storage/shelving combo was made bespoke to Peter and Sue's design. Find a sheepskin rug at The French Bedroom Company. Heal's sells original Panton chairs in White.



Home truths

ANY SURPRISES IN YOUR

WARDROBE? Marc Bolan-esque bright purple suede platform boots and patchwork flared trousers – relics from my singer/songwriter days – both ready to be claimed by my daughter at any point.

WHICH PARENT DO YOU TAKE AFTER? My late mum for all her eccentricities, compassion and artistic eye. I've got my dad's direct approach too!

ROCK OR DISCO? Both. I grew up fanatical about David Bowie, Pink Floyd, Santana and Led Zeppelin, but I knew all the words to Donna Summer and Michael Jackson tunes. Now, it's Florence Welch and Jessie Ware.

FAVOURITE ALBUM-COVER ART? Santana's *Abraxas* stands out.

FANCY-DRESS COSTUME? French maid, while I have the legs for it!

PAPERBACK OR E-READER?

Paperback, as once you've read them, they bring colour, dimension and life to your rooms.

IF YOU WERE A CARTOON CHARACTER, WHO WOULD YOU BE?

According to my family, a cross between Wonder Woman and Daisy Duck. For the record, I'm okay about the former...



← EN-SUITE BATHROOM

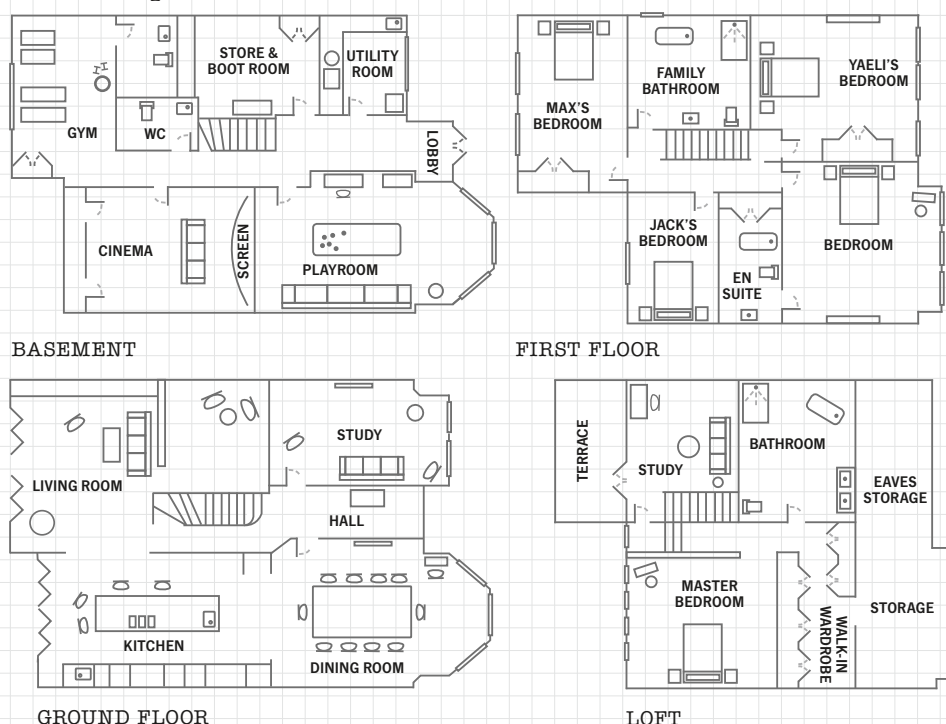
Sue used crystal light fittings for a twist on the concrete theme. 'I love that contrast of feminine and rough,' she says. The stool adds a splash of wake-me-up pink. **GET THE LOOK** The bath is the Kurv by BC Designs, installed with Vado's Instinct floor-mounted mixer. Artelinea makes the Monolite glass sink/vanity unit. Find the chandelier and wall sconce at Crystal Corner. The stool is by The Colour Union from Achica. For wall tiles like this, try Mosaic Tile Shop's Mazurka mosaic tiles in Onyx.

MASTER BEDROOM ↓

This room mixes urban and romantic, teaming brick walls with embroidered linen. Sue admits that she asks Peter about décor, then does what she wants to anyway! The approach works: 'The master suite is Peter's haven'. **GET THE LOOK** The French Bedroom Company's Provencal Louis XV bed is similar to this. The throw is made with Zoffany's Arlecchino linen and Sanderson's Lyric silk. Sue designed the night stand using antique mirrors from Rough Old Glass. The Neo Baroque chandelier is by Abigail Ahern. Find a vintage Murano glass wall light at deconet.com.



The blueprint



Livingetc loves

THE FACE-OFF between industrial brick and concrete vs natural slate and reclaimed wood. **HOW PRINT AND PATTERN** add a touch of pretty to the décor. **THE HEAD-TO-TOE** colour saturation of inky colours on walls, ceiling and paintwork in the ground-floor rooms. **SUE'S UPCYCLED FURNITURE** and vintage buys, which add wit and personality to the space. **THAT ALBUM COVER** floor. Time to dig out your vinyl collection...



Download your digital edition today: visit housetohome.co.uk/digital-editions/livingetc